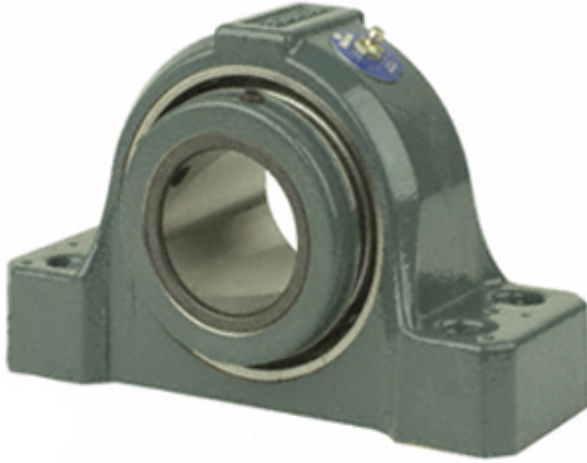




LLC NTN-SNR BEARINGS RUS

3.438 Inch | 87.325 Millimeter x 4.016 Inch | 102 Millimeter x 3.75 Inch | 95.25 Millimeter Dodge SP4B-S2-307RE Pillow Block Roller Bearing Units



Bearing No. SP4B-S2-307RE

SP4B-S2-307RE Bearing 2D drawings and 3D CAD models

Category	Pillow Block Bearings
Inventory	0.0
Manufacturer Name	ABB MOTORS AND MECHANICAL INC
Minimum Buy Quantity	N/A
Weight	17.87
EAN	0782476366674
Product Group	M06288
Number of Mounting Holes	4
Mounting Method	Concentric Collar
Housing Style	4 Bolt Pillow Block
Rolling Element	Spherical Roller Bearing
Housing Material	Cast Steel
Expansion / Non-expansion	Expansion
Mounting Bolts	3/4 Inch
Relubricatable	Yes
Insert Part Number	INS-S2-307R
Seals	Triple Lip Contact
Housing Configuration	1 Piece Solid
Inch - Metric	Inch
Other Features	Double Row Has Flinger With Set Screw
Long Description	4 Bolt Pillow Block; 3-7/16" Bore; 3-3/4" Base to Center Height; Concentric Collar Mount; Spherical Roller



LLC NTN-SNR BEARINGS RUS

	Bearing; 9-3/8" Minimum Bolt Spacing; 10-5/8" Bolt Spacing Maximum; Relub
Category	Pillow Block
UNSPSC	31171511
Harmonized Tariff Code	8483.20.40.80
Noun	Bearing
Keyword String	Pillow Block
Manufacturer URL	http://www.dodge-pt.com
Manufacturer Item Number	SP4B-S2-307RE
Weight / LBS	39.37
Bolt Spacing Minimum	9.375 Inch 238.125Millimeter
d	3.438 Inch 87.325 Millimeter
D	4.016 Inch 102 Millimeter
Nominal Bolt Center to Center	10 Inch 254 Millimeter
Bolt Spacing Maximum	10.625 Inch 269.875Millimeter
B	3.75 Inch 95.25 Millimeter
Actual Bolt Center to Center	0 Inch 0Millimeter