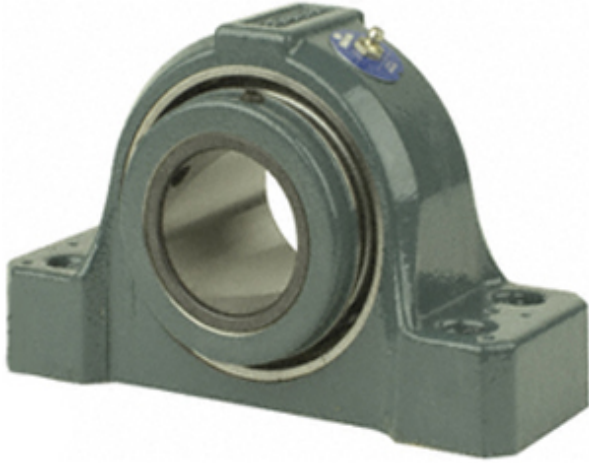




LLC NTN-SNR BEARINGS RUS



3.438 Inch | 87.325 Millimeter x 4.01 Inch |
101.854 Millimeter x 3.75 Inch | 95.25 Millimeter
Dodge SEP4B-S2-307RE Pillow Block Roller
Bearing Units

Bearing No. SEP4B-S2-307RE

SEP4B-S2-307RE Bearing 2D drawings and 3D CAD models

Category	Pillow Block Bearings
Inventory	0.0
Manufacturer Name	ABB MOTORS AND MECHANICAL INC
Minimum Buy Quantity	N/A
Weight	17.99
EAN	0782476367572
Product Group	M06288
Number of Mounting Holes	4
Mounting Method	Concentric Collar
Housing Style	4 Bolt Pillow Block
Rolling Element	Spherical Roller Bearing
Housing Material	Cast Steel
Expansion / Non-expansion	Expansion
Mounting Bolts	3/4 Inch
Relubricatable	Yes
Insert Part Number	INS-S2-307R
Seals	Triple Lip Contact
Housing Configuration	1 Piece Solid
Inch - Metric	Inch
Other Features	Double Row Has Flinger With Set Screw
Long Description	4 Bolt Pillow Block; 3-7/16" Bore; 3-3/4" Base to Center Height; Concentric Collar



LLC NTN-SNR BEARINGS RUS

	Mount; Spherical Roller Bearing; 10-3/4" Minimum Bolt Spacing; 11-1/4" Bolt Spacing Maximum; Relu
Category	Pillow Block
UNSPSC	31171511
Harmonized Tariff Code	8483.20.40.80
Noun	Bearing
Keyword String	Pillow Block
Manufacturer URL	http://www.dodge-pt.com
Manufacturer Item Number	SEP4B-S2-307RE
Weight / LBS	39.63
B	3.75 Inch 95.25 Millimeter
Bolt Spacing Minimum	10.75 Inch 273.05Millimeter
Bolt Spacing Maximum	11.25 Inch 285.75Millimeter
Actual Bolt Center to Center	0 Inch 0Millimeter
D	4.01 Inch 101.854 Millimeter
d	3.438 Inch 87.325 Millimeter
Nominal Bolt Center to Center	11 Inch 280 Millimeter